

ALPHA FASHION MAG

- INTERNATIONAL -

CANDID ISSUE

COVER MODEL: **ELISE BLOM** FEAT'D IN "STARLIGHT"
BALMAIN: FW 18-19 CAMPAIGN | STARRING MODEL: **MILLA JOVOVICH**,
AND EXCLUSIVE CROC COLLECTION BY **STRATHBERRY**.

ALPHAFASHIONMAG.COM



OCTOBER

2018

CONTENTS

76

OUTLINE OF VANITY

by Shardul Navare

69

MOSCHINO

AW 2018 Campaign
by Steven Meisel

62

**CHOOSE
YOUR STYLE**

by Paco Di Canto

Photographer: Aleksandr Pershin

Model: Daria Shlegel

Agency: Travo Model Mgnt NYC

Hair: Jenny

Stylist: Lulu

Mua: Jinyu Zhou

CONTENTS

Editorials

04 | DIFFERENT/OPPOSITE

by André Theissen

38 | FINDING MY WAY

by Aleksandr Pershin

56 | YOU DON'T KNOW ME

by Julia De Robertis

48

| STRATHBERRY AW '18
EAST/WEST "EMBOSS CROC"
COLLECTION



14

| STARLIGHT
by Andrew Ho Photography

Campaigns

28 - 37 | BALMAIN FW '18
w/ Milla Jovovich

Stories/Articles

13 | STARLIGHT
by Jane Frances

SPECIAL THANKS

Skagen, Moschino, Strathberry,
NOMOS & Balmain

COVER MODEL

Talent: Elise Blom

COVER CREDITS

Photographer: Andrew Ho Photography

Agency: Vivien's

Mua: Sam H Enticknap Make Up Artist

Creative Director & Stylist: Jane Frances

Wardrobe Stylist Assistant: Rumbii Mudzengi

Hair: Jody Fiannaca

EDITORIAL SUBMISSIONS:

www.alphafashionmag.com



DIFFERENT | OPPOSITE

Editorial: **DIFFERENT | OPPOSITE**

Photographer: **ATEO PHOTOGRAPHY** by **ANDRÉ THEISSEN**

Model: **JULIA ROTHE** | Agency: ICAN Model Management

Model: **FEANA GROENEVELD** | Agency: Pharos Models

Mua: **NORA ORTHOFER**

Products:

The makeup is made by Nora Orthofer.

The brand | **MAC COSMETICS.**

The accessory was made by Nora Orthofer.

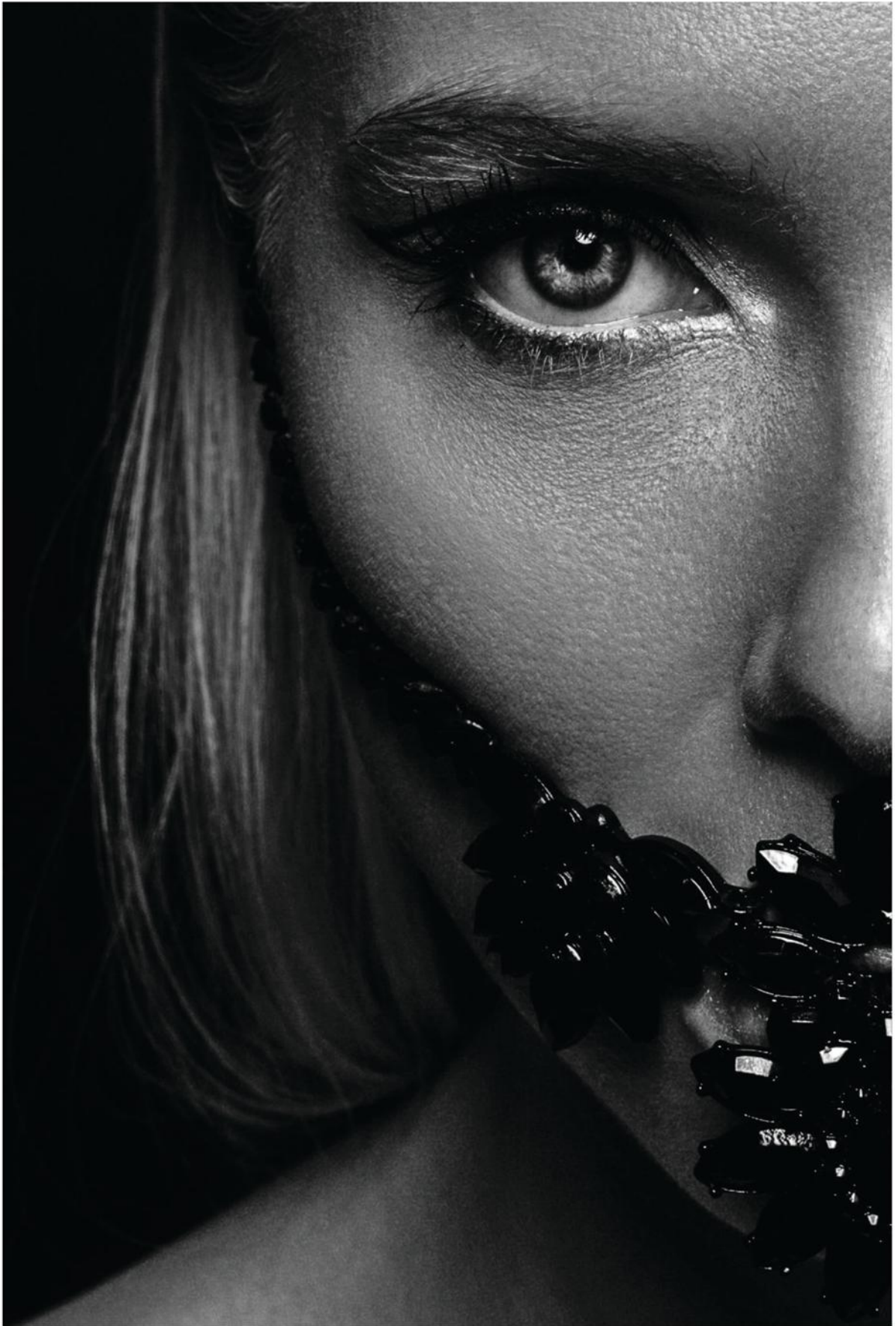
The brand: **MAC COSMETICS** | Accessory by **NORA ORTHOFER**.



The brand: **MAC COSMETICS** | Accessory by **NORA ORTHOFER**.



The brand: *MAC COSMETICS* | Accessory by *NORA ORTHOFER*.



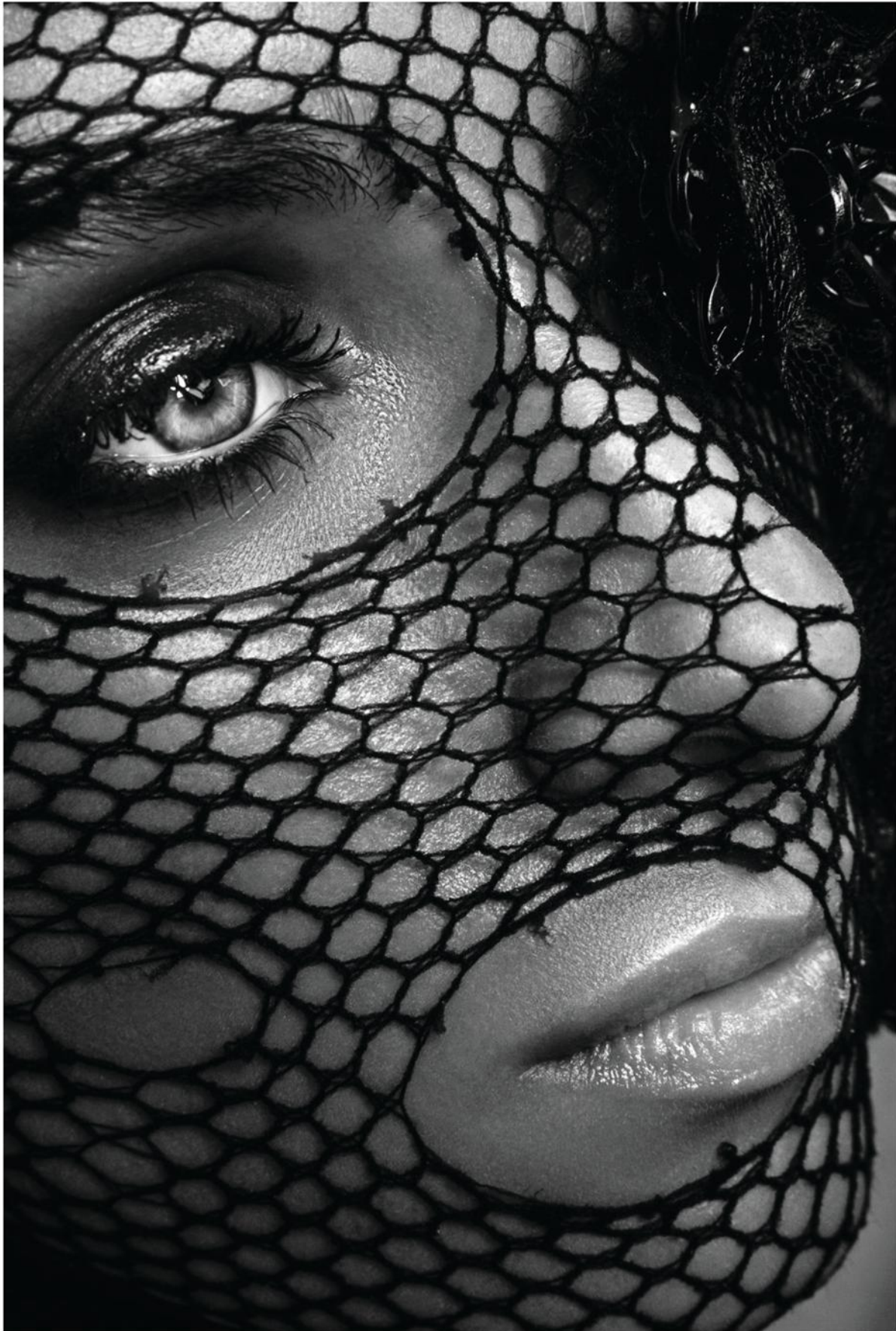
The brand: **MAC COSMETICS** | Accessory by **NORA ORTHOFER**.



The brand: *MAC COSMETICS* | Accessory by *NORA ORTHOFER*.



The brand: *MAC COSMETICS* | Accessory by *NORA ORTHOFER*.



A F M

- I N T E R N A T I O N A L -

EDITOR-IN-CHIEF Kareem A. Irby
MANAGING EDITOR Shaquanda Cox

CONTRIBUTORS

PHOTOGRAPHER Paco Di Canto
PHOTOGRAPHER André Theissen | Ateo Photography
PHOTOGRAPHER Aleksandr Pershin
PHOTOGRAPHER Shardul Navare
PHOTOGRAPHER Julia De Robertis
PHOTOGRAPHER Andrew Ho Photography

PHOTOGRAPHERS

DIRECTOR OF PHOTOGRAPHY Dolores Ruiz Diaz

ART & PHOTO

CREATIVE DIRECTOR Jane Frances

BEAUTY & STYLE

CONTRIBUTING BEAUTY EDITOR Kira Kolosova
CONTRIBUTING BEAUTY EDITOR Joana Teixeira

HEALTH

CONTRIBUTING HEALTH EDITOR Roberta Hernández Barba

EDITORIAL PRODUCTION

STYLISTS Jane Frances

RUNWAY & EVENTS

PHOTOGRAPHER Amy Boyse | AU (VAMFF)
PHOTOGRAPHER Orlett Pearson McCall | NY (NOLCHA SHOWS)

ADVERTORIALS

PHOTOGRAPHER Dolores Ruiz Diaz

ALPHAFASHIONMAG.COM


SENIOR MUSIC PRODUCER Lovett Evans (Amori Sounds)



PRINTED IN THE U.S.A, CA
BLUB INC.

K A Z O K U
Japan





“Watch carefully the magic that occurs when you give a person just enough comfort to be themselves.” — Atticus

Starlight

In this editorial cover story, we vision a glamorous model sneaking away after a long day of work to check out the new city alone and breath the fresh night air. From behind the lens, we capture the magical moments that happen when she lets loose and be herself.

It is human nature to judge. What life struggle could someone like that be facing? She is represented by a prestigious international modeling agency, traveled around the world for work, graced the top magazine covers, and walked among the best in NYC and Milan shows. It is easy to overlook how much she has to deal with. Her world is highly competitive, she is continuously judged, and expected to deliver 100%. That kind of pressure can take a toll on anyone.

To you out there - we hope that this editorial reminds you that we are all human. Each of us is dealing with our own battle and no one is perfect. So today, take a moment to show kindness, to yourself and others you encounter. Something so simple can make a difference in someone's life.

Dress: *HOODEDWPT*
Necklace: *VALENTE COUTURE*
Statement Earrings: *MARIKO SOUTH PERTH*

STARLIGHT

Editorial: *STARLIGHT*
Photographer: *ANDREW HO PHOTOGRAPHY*
Talent: *ELISE BLOM*
Agency: *VIVIEN'S*
MUA: *SAM HENTICKNAP*
Hair: *JODY FIANNACA*
Wardrobe Stylist Assistant: *RUMBII MUDZENGI*
Creative Dir. & Stylist: *JANE FRANCES*



Dress: *HOODEDWEPT*
Leather Shorts: *HOODEDWEPT*
Necklace: *VALENTE COUTURE*
Statement Earrings: *MARIKO SOUTH PERTH*
Clutch: *OLGA BERG*

Sequin Bolero: *HOODEDWEPT*
Dress: *HOODEDWEPT*
Necklace: *VALENTE COUTURE*





Sequin Bolero: **HOODEDWEPT**
Dress: **HOODEDWEPT**
Velvet Socks: **KISS ME SIMONE**
Clutch: **BEST DRESSED ACCESSORIES**
Shoes: **NINE WEST**
Necklace: **VALENTE COUTURE**





Dress: *HOODEDWEPT*
Necklace: *VALENTE COUTURE*
Statement Earrings: *MARIKO SOUTH PERTH*





Bralette: *KISS ME SIMONE*
Short Crushed Leather Pants: *AMETRINE*
Socks: *JONTE*
Bracelet: *MARIKO SOUTH PERTH*
Half Gloves: *BEST DRESSED ACCESSORIES*
Statement Earrings: *CHILLI & Co*
Booties: *NINE WEST*

Sequin Top & Bottom Wide Pants: **JONTE**
Lingerie: **KISS ME SIMONE**
Bracelet: **VALENTE COUTURE**





Dress: *VILLAMAR COUTURE*
Socks: *KISS ME SIMONE*
Statement Earrings: *BEST DRESSED ACCESSORIES*
Clutch: *OLGA BERG*

Dress: *VILLAMAR COUTURE*
Statement Earrings: *BEST DRESSED ACCESSORIES*



Jumpsuit: *VOOGETTA*
Faux Feather Coat: *AIYA THE LABEL*
Belt: *BEST DRESSED ACCESSORIES*
Earrings: *CHILLI & Co*



Sequin Dress: *HOODEDWEPT*
White Leather Jacket: *AIYA THE LABEL*
Shoes: *NINE WEST*



Chinese Restaurant
福 叙福樓酒家



White & Rose Top: **PATRIZIA PEPE**
Leather Pants: **SEED HERITAGE**
Leather Jacket: **AIYA THE LABEL**



Creative Director: Olivier Rousteing | Talent: Milla Jovovich | Director: Jake Nava
Photographer: An Le | Agency: Sunshine | Hair: Balmain Hair x Nabil



BALMAIN

PARIS



BALMAIN

PARIS





BALMAIN

PARIS

Creative Director: Olivier Rousteing | Talent: Milla Jovovich | Director: Jake Nava
Photographer: An Le | Agency: Sunshine | Hair: Balmain Hair x Nabil





Creative Director: Olivier Rousteing | Talent: Milla Jovovich | Director: Jake Nava
Photographer: An Le | Agency: Sunshine | Hair: Balmain Hair x Nabil



BALMAIN

PARIS



BALMAIN

PARIS

Creative Director: Olivier Rousteing | Talent: Milla Jovovich | Director: Jake Nava
Photographer: An Le | Agency: Sunshine | Hair: Balmain Hair x Nabil



FINDING MY WAY

Editorial: **FINDING MY WAY**

Photographer: **ALEKSANDR PERSHIN**

Model: **DARIA SHELGEL**

Agency: **TRAVO MODEL MGMT | NYC**

Stylist: **LULU**

Makeup: **JINYU ZHOU**

Hair: **JENNY**



Bowtie Jacket: *SHUSHU/TONG*
Polo Bodysuit: *Y/PROJECT*
Trousers: *JUNWEI LIN*
Knee High Boots: *AN ARCH GLANCE X YIRANTIAN*

Bowtie Jacket: *SHUSHU/TONG*
Polo Bodysuit: *Y/PROJECT*
Trousers: *JUNWEI LIN*
Knee High Boots: *AN ARCH GLANCE X YIRANTIAN*



Coat: WMWM
Checked Dress: DAWEI
Legging: OUDE WAAG
Shoes: CAMPER



Coat: *WMWM*
Checked Dress: *DAWEI*
Legging: *OUDE WAAG*
Shoes: *CAMPER*





Strip Shirt: *SHUSHU/TONG*
Waistcoat: *JUNWEI LIN*
Checked Jacket: *WMWM*
Checked shorts: *WMWM*
Knee High Boots: *AN ARCH GLANCE X YIRANTIAN*

Strip Shirt: **SHUSHU/TONG**
Waistcoat: **JUNWEI LIN**
Checked Jacket: **WMWM**
Checked shorts: **WMWM**
Knee High Boots: **AN ARCH GLANCE X YIRANTIAN**



Zip Front Jacket: *SHORT SENTENCE*
Trousers: *SHORT SENTENCE*
Cape: *ANGEL CHEN*
Ankle Boots: *AN ARCH GLANCE X YIRANTIAN*



Top: *SHORT SENTENCE*
Headpiece: *SHORT SENTENCE*

Top: *SHORT SENTENCE*
Headpiece: *SHORT SENTENCE*
Legging: *OUDE WAAG*
Rubber Boots: *SAMUEL GUI YANG*





Strathberry explores explores the connection between art and fashion to create a bond that is both aesthetic and conceptual. Textures are at the forefront this season, with suede making a comeback in new exquisite tones along with the shearling reintroduced in a voluminous curly version. Embossed croc gives an exotic and luxurious touch to both the East/West and Mini Crescent.





STRATHBERRY



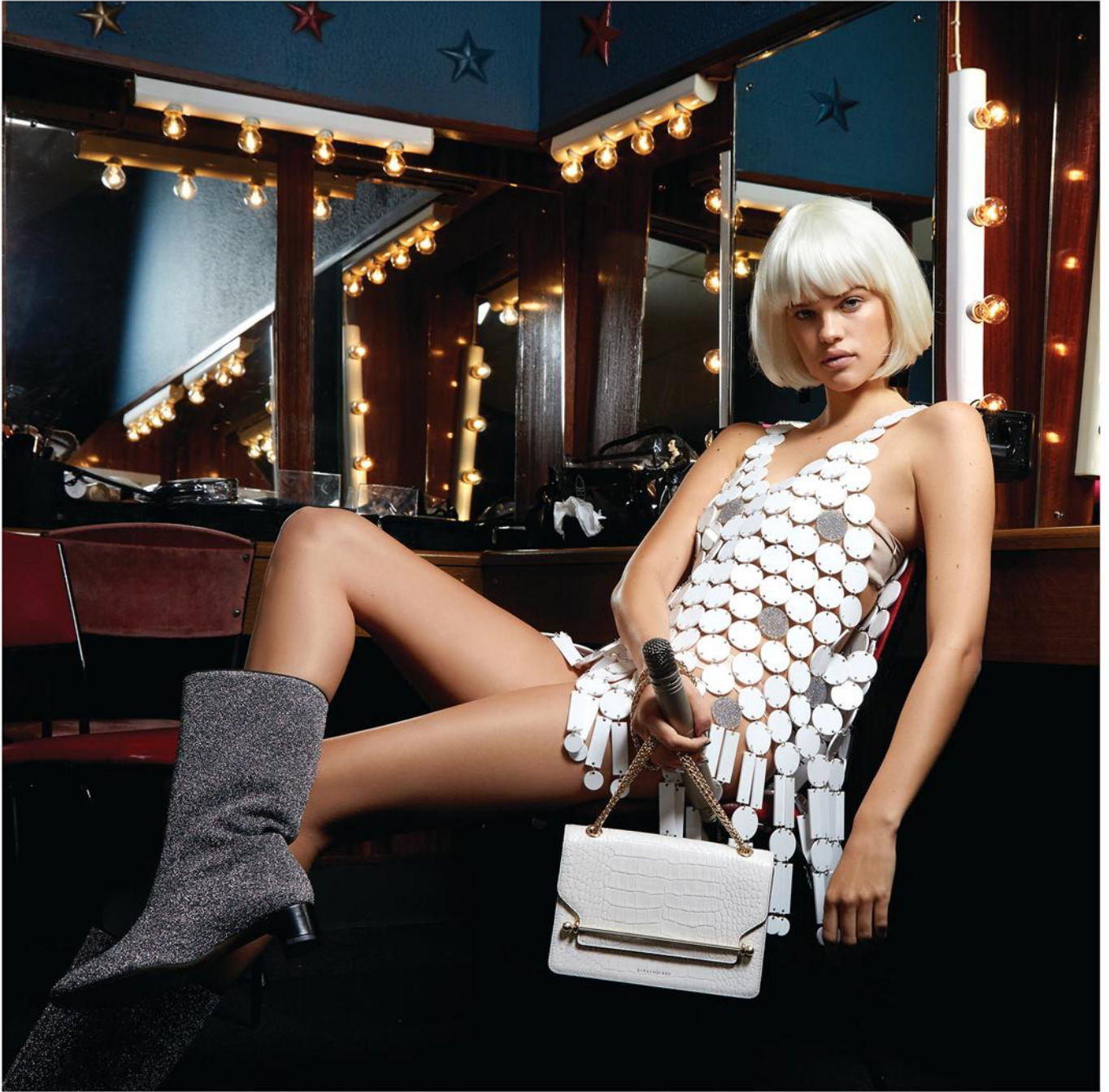
STRATHBERRY



STRATHBERRY



STRATHBERRY



STRATHBERRY



STRATHBERRY



Handcrafted for the holidays



Suit: *MANGO* | Bra: *TRIUMPH*



You Don't Know Me

Editorial: *YOU DON'T KNOW ME*
Photographer: *JULIA DE ROBERTIS*
Model: *ALINA CHLEBECEK*
Hmua: *YUNA PUH*

Body: SASSA | Jacket: YAS | Jeans: ZARA



Jacket: *MANGO* | Blouse: *GUESS* | Belt: *ZARA*



Body: *CALVIN KLEIN* | Trousers: *LIEBESKIND*



Body: **CALVIN KLEIN** | Trousers: **LIEBESKIND**



Trench: **NAF NAF** | Bra & Panty: **PALMER**



Choose **YOUR STYLE**

Editorial: **CHOOSE YOUR STYLE**
Photographer: **PACO DI CANTO**
Model: **NERA PETROVIC**
Agency: **THE LAB MODELS MILANO**
Stylist: **ANGELINA GONCHAROVA**
Mua: **PAOLO DE VITA**

Jumpsuit: *FRANKLIN MARSHALL*
Goggle: *PHILLIPP PLEIN*
Top: *ADIDAS*
Chain: *SHARRA PAGNO*





Dress: *VIVETTA* | Jacket: *FRANKLIN MAESHALL* | Glasses: *MOSCOT*





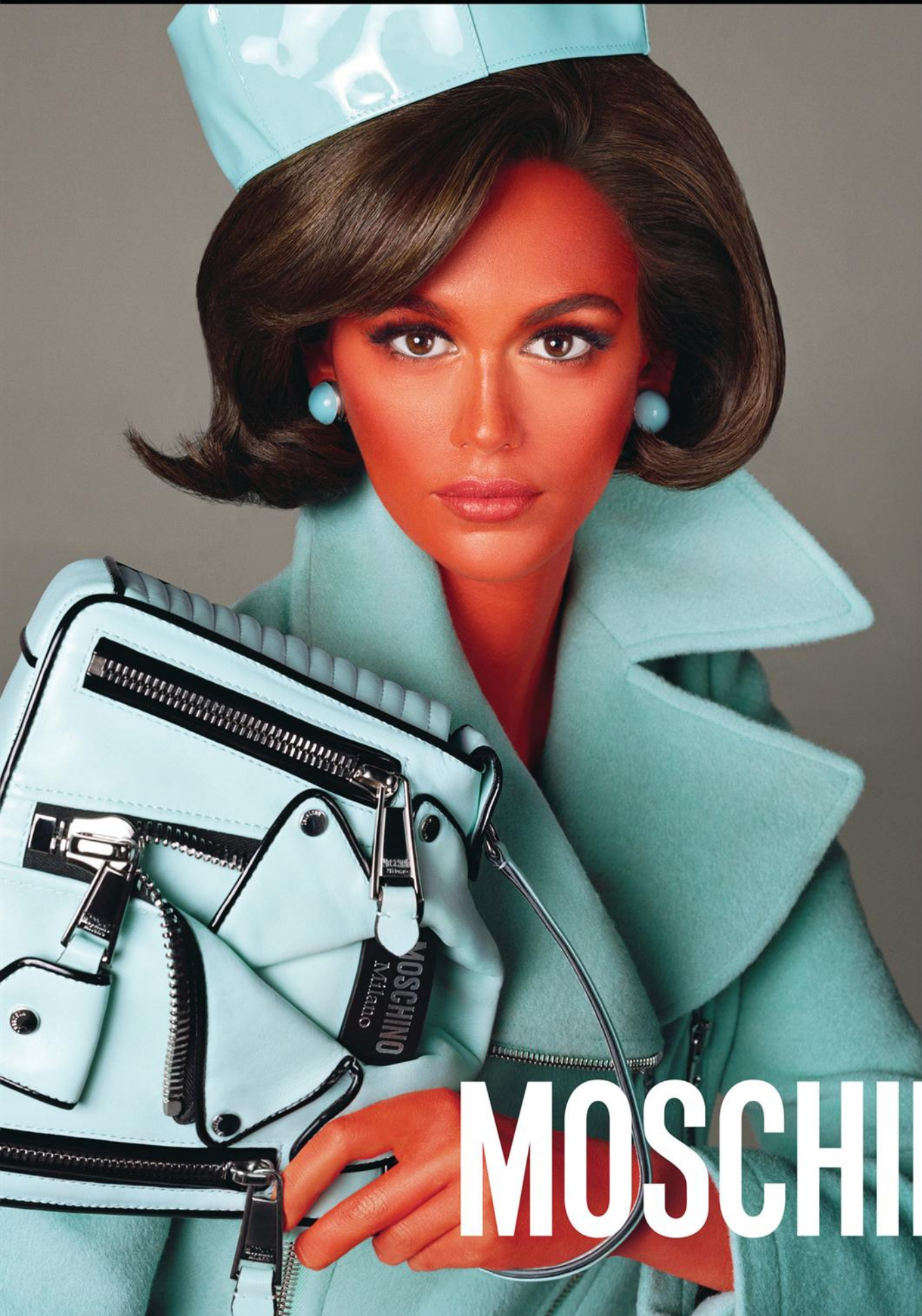


High Neck Top: A-LAB
Dress: ANTEPRIMA
Bag: LA CARRIE



Sweater: **ICEBERG**
Ring: **SHARRA PAGANO**

MOSCHINO AW 2018 CAMPAIGN
Starring Models: Gigi Hadid, Kaia Gerber, Soo-Joo Park, Vittoria Ceretti and Rianne Van Rompaey
Creative Director: Jeremy Scott | Photographer: Steven Meisel | Stylist: Carlyne Cerf De Dudzeele | Hair: Guido Palau
Make-up: Pat McGrath | Casting Director: Piergiorgio Del Moro and Samuel Ellis Scheinman



MOSCHINO

MOSCHINO AW 2018 CAMPAIGN
Starring Models: Gigi Hadid, Kaia Gerber, Soo-Joo Park, Vittoria Ceretti and Rianne Van Rompaey
Creative Director: Jeremy Scott | Photographer: Steven Meisel | Stylist: Carlyne Cerf De Dudzeele | Hair: Guido Palau
Make-up: Pat McGrath | Casting Director: Piergiorgio Del Moro and Samuel Ellis Scheinman



MOSCHINO

MOSCHINO AW 2018 CAMPAIGN

Starring Models: Gigi Hadid, Kaia Gerber, Soo-Joo Park, Vittoria Ceretti and Rianne Van Rompaey
Creative Director: Jeremy Scott | Photographer: Steven Meisel | Stylist: Carlyne Cerf De Dudzeele | Hair: Guido Palau
Make-up: Pat McGrath | Casting Director: Piergiorgio Del Moro and Samuel Ellis Scheinman



MOSCHINO

MOSCHINO AW 2018 CAMPAIGN
Starring Models: Gigi Hadid, Kaia Gerber, Soo-Joo Park, Vittoria Ceretti and Rianne Van Rompaey
Creative Director: Jeremy Scott | Photographer: Steven Meisel | Stylist: Carlyne Cerf De Dudzeele | Hair: Guido Palau
Make-up: Pat McGrath | Casting Director: Piergiorgio Del Moro and Samuel Ellis Scheinman



MOSCHINO

MOSCHINO AW 2018 CAMPAIGN

Starring Models: Gigi Hadid, Kaia Gerber, Soo-Joo Park, Vittoria Ceretti and Rianne Van Rompaey
Creative Director: Jeremy Scott | Photographer: Steven Meisel | Stylist: Carlyne Cerf De Dudzeele | Hair: Guido Palau
Make-up: Pat McGrath | Casting Director: Piergiorgio Del Moro and Samuel Ellis Scheinman



MOSCHINO

K A Z O K U



Outline Of Vanity

Editorial: **OUTLINE OF VANITY**

Model: **DANIELA**

Photography: **SHARDU NAVARE**

Mua: **FLAVIA**

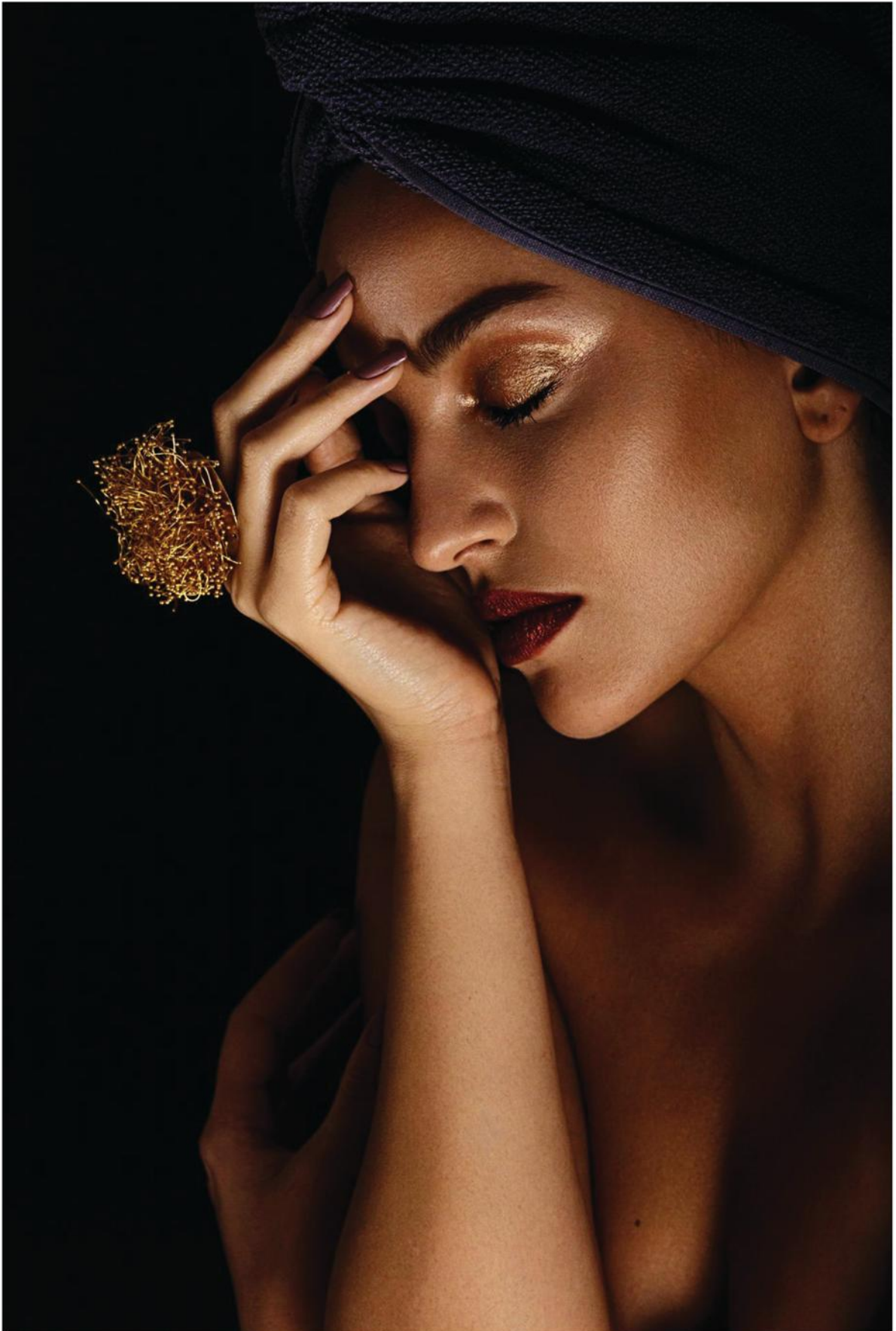
Stylist: **SHEFALI DEORA**

Earrings: *KOHAR*





Ring: *RAJI ANAND DESIGN*



Ring: *RAJI ANAND DESIGN*





Image courtesy of skagen | The Lisabet tote features two handles long enough for comfortable carrying over the shoulder or in your hand. A zipper closure opens to reveal a spacious interior that is coated for easy cleaning and features two slip pockets and a pen holder. An exterior slip pocket keeps essentials within reach. www.skagen.com | Color: Black Leather **\$139.00**.



Image courtesy of bulgari | 18kt rose gold bracelet composed of four tiny chains, easily interchangeable, 18kt rose gold 27mm case, crown set with a cabochon-cut rubellite, Bvlgari-personalised high-precision quartz movement